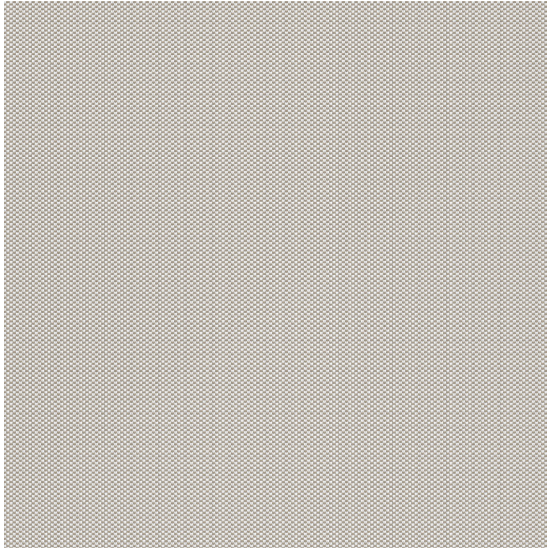


## SAORI



Ref n° F2431

### Composition

70% polyester  
30% recycled polyester

### Width

140m ± 2cm

### Weight

400 gr/m2 ± 5%

## SPECIFICATIONS:

---

### Abrasion resistance

90.000 ciclos EN ISO 12947-2

### Abrasion resistance

(change of shade after 3000 cycles)

5 EN ISO 12947/4  
y EN 14465:2003 (Annex A).

### Pilling resistance

5 EN ISO 12947-2

### Resistance to seam slippage (mm)

Warp: 1,5 mm

Weft: 2 mm

EN ISO 13936/2

### Fastness to artificial light

7 EN ISO 105-B02 y

EN ISO 105 B02/A01

## INFLAMMABILITY

---

EN1021 - Part 1

BS5852 - Part 1

CAL TB 117

EN1021 - Part 2\*

BS5852 - Part 2\*

CRIB 5\*

## CERTIFICATES

---



STANDARD  
100



9001:2015

## MAINTENANCE

---

### Washing conditions



### Dimensional change in domestic washing and drying (%)

Warp: -3%

Weft: 0%

EN ISO 3759 y

EN ISO 6330

\*Flame retardant standards available upon request.  
The information shown is for guidance purposes only and may be subject to change. For specific technical requirements, please consult our sales department.