

# CAMPOS®

Stretch knitted fabric.



## TOURMALINE

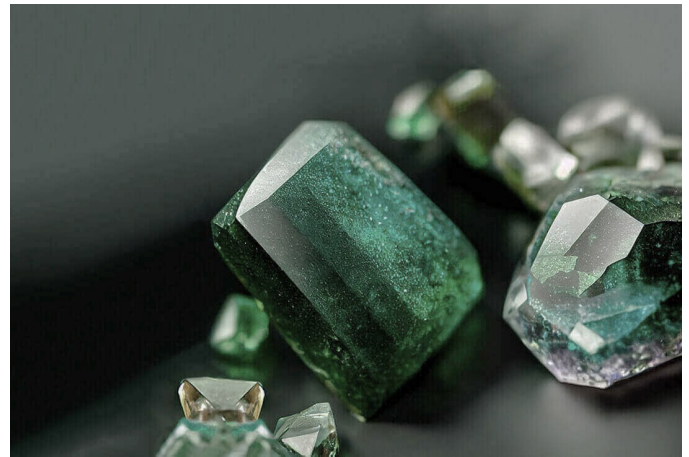
---

The treatment of tourmaline in mattress fabrics is an innovative technology that seeks to harness the unique properties of tourmaline, a multicolored mineral gem found worldwide.

Tourmaline has energetic properties, known for its piezoelectric and pyroelectric properties. These properties allow tourmaline to generate an electric charge when subjected to pressure or temperature changes. In the context of mattresses, the tourmaline treatment is used to leverage these properties for the benefit of sleep quality.

When the human body comes into contact with a mattress fabric treated with tourmaline, the pressure and heat from the body can activate the piezoelectric and pyroelectric properties of tourmaline. This may result in the generation of negative ions and the emission of far-infrared rays (FIR).

Negative ions are commonly associated with positive effects on well-being and mood, believed



to help reduce stress and improve sleep quality. Far-infrared rays, on the other hand, have been linked to improved blood circulation and muscle relaxation, which can also be beneficial for a more restful sleep.

## PROPERTIES OF THE TREATMENT

---

- Negative ions
- Anti-stress
- Greater oxygenation
- Stimulates new cells



Negative ions



Anti-stress



Greater oxygenation



Stimulates new cells